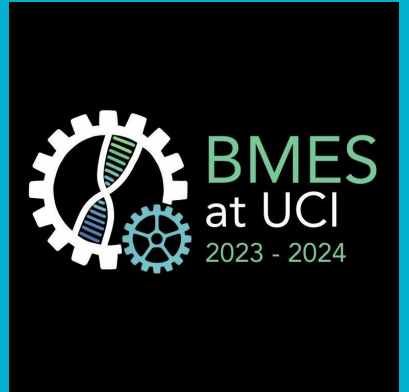


CADuino Workshop

Presented by Dean Zepeda
Jr. BME Workshop 4
BMES @ UCI



Sign in

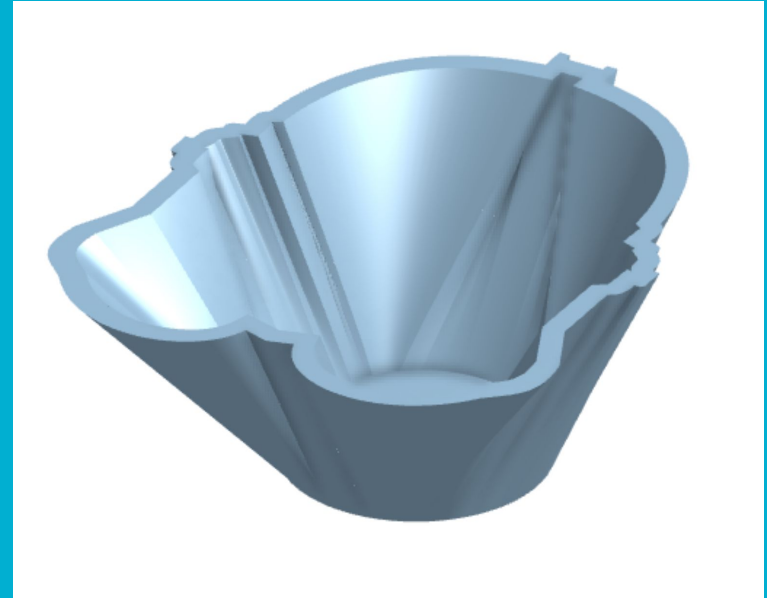


Open Onshape, log in,
and open a new
project



Common CAD Techniques to Know

- Fillet/Chamfer
- Sketching from images
 - Splines
- Mirror entities
- Adding additional planes
- Lofts
- Shells



Onshape Q&A

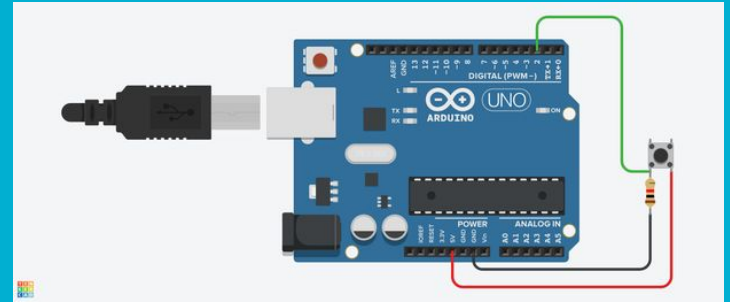
Assembly of a multi-part CAD

- Can use the assembly feature in Onshape
 - Difficult for those new to CAD
 - Attaching pieces can be finicky
- For project purposes, TinkerCAD assembly should suffice
 - Easy to use, drag and drop
 - Scale any model

Open up TinkerCAD



TinkerCAD also does Arduino circuitry!



Break!



Project Work Time

- Your proposals should be approved by now
- Begin full dive work on the projects
 - Making the CAD for the device housing
 - Model relevant circuits for device hardware
 - Write code for device software
 - Draft presentation slides
- Remember:
 - Product should be a **novel innovation** that sets it apart from what's on the market
 - You don't need a working physical prototype, but the mechanisms of how a theoretical prototype would work must be fully fleshed out
- Ask me or the other coordinators about any project details
 - You can ask volunteers for any technical help too

Announcements

- Today is the last Winter workshop!
 - Attendance will be counted from Fall to Spring workshops for certificates :)
 - Spring Workshops start **April 7th!** We will start talking about presentations and pitches.
 - CHECK YOUR/PARENT OR GUARDIAN EMAILS: we will be sending a form that is **REQUIRED** for your certificates and continuation of the program!

- **PROJECT PEOPLE:** First Check-in will be **April 7th**
 - We are available through email at all times, and we will respond during normal business hours!
 - Presentations will be on **APRIL 28TH!**